



# Manhattan with Edge: Top 10 Condos on the Lower East Side

By Sandra Herrera  
July 31, 2018

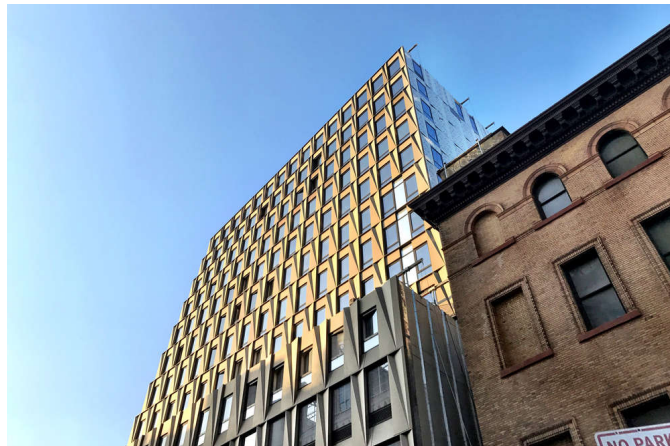


*Lower East Side Condos with style*

Widely known for its tenement buildings, the gritty and "real" Lower East Side might be trading those in for swanky new residential developments. And while that typically means a lot of cookie-cutter condos, the neighborhood has allowed (or forgiven) some cutting-edge designs to rise – even before the announcement of the massive Essex Crossing, which will alter the area forever with its 1,079 apartments, 400,000 square feet of offices, 450,000 square feet of retail, and so much more. From The Switch Building to ODA's newly-built 100 Norfolk, CityRealty ranks the Lower East Side's most striking past and in-progress condos.

## **1. 242 Broome Street**

Designed by SHoP Architects | Built in 2018  
55 Units | 14 Floors



*(CityRealty)*

Nearly finished and ready for occupancy, 242 Broome is the first condo offering within the game-changing Essex Crossing development. Designed by SHoP Architects, the building's signature champagne-aluminum façade gently torques to the west, enhancing views while beautifully reflecting the neighborhood's surrounding architecture. The 14-story, 55-unit building has one- to three-bedroom residences refined by DXA Studio. Shared amenities are specifically designed to promote socialization, wellness, and relaxation. They include an entertainment lounge which can seat 18 guests in a kitchen and dining area, a fitness center, a children's playroom, and a pool table. To top it all off, the building has a landscaped and furnished rooftop with grills and sweeping views of the Manhattan skyline.

**Featured Listing: #11D | 1 bed, 1 bath | \$1.685M**



*(Douglas Elliman)*

<https://www.cityrealty.com/nyc/market-insight/features/get-to-know/manhattan-edge-top-10-condos-lower-east-side/20001>